



# RHODODENDRON NEWS

Newsletter of the Portland Chapter of the American Rhododendron Society  
Volume LXVIII | No 4 | April 2024

## Meetings

3rd Thursdays

September through May  
Reedwood Friends Church  
2901 SE Steele Street  
Portland 97202

Next Meeting: April 18, 2024

Program: Iris expert Lynda Miller, owner of Miller's Manor Garden in Canby.

Meetings start at 7PM with a social half-hour preceding the main meeting. We clean up and exit by 9:30PM.

And if you want, meet at Woodstock Wine and Deli (SE Woodstock at 42nd Ave.) at 5pm for an informal happy hour meal!

## TABLE OF CONTENTS

President's Letter.....	1
Volunteer Opportunities with the Portland Chapter of the American Rhododendron Society (PCARS) .....	2
The Van Veen Project.....	4
Smith Garden Workday In Snow!..	7
2024 April Haiku.....	9
Classified.....	9
Van Veen Heritage Garden & Nursery Workday.....	9
Signup for 2024 Smith Garden Open Days .....	9
A Rhody Reminder... ..	9
ARS 2024 Spring Convention.....	10
Upcoming Events .....	11
March Meeting Mason Bees.....	12
Activities of the Portland Chapter ARS .....	14
The Crossword Project.....	15
Editor's Page.....	17
Resources .....	18
Portland Chapter ARS .....	20

## President's Letter

April is a great month for us and our Rhododendrons. The early bloomers get us excited for what's to come in May and June. If the weather cooperates we also can spend more time outside taking care of all things in our gardens, especially after what we dealt with in January.



*Rhododendron schlippenbachii* or Royal Azalea (Photo Evelyn Kritler)

I hope you all will have a chance to see the Crystal Springs Rhododendron Garden (Crystal Springs) **Early Show** and bring one of your early blooming rhododendrons for the display. If not, you have an opportunity to enter the Mother's Day Show on May 12th at Crystal Springs. Even if you don't have any early blooming rhodies, I know that you have some that will be blooming

in May. Give it a try, you may win the Novice Trophy even if you never have won a trophy before.

Ann Clack has put together some beautiful trophies in all categories that you will cherish for a long time.

If you are not inclined to enter the Truss Show you can volunteer to help in some capacity and also buy a rhododendron or two at the plant sale and be ready to enter next year.

I hope to see you there. The Garden is looking good, thanks to our dedicated staff and volunteers.

Steve Hopkins, President  
PCARS



*Rhododendron* 'Noyo Brave' (Photo Evelyn Kritler)

## Volunteer Opportunities with the Portland Chapter of the American Rhododendron Society (PCARS)

To follow up on the President's message on page 1 of this Newsletter, there are many volunteer opportunities in which you can be involved with PCARS. Whether you are new or experienced, you will find reward in being on a nonprofit Board of Directors as a Volunteer or helping out on a committee.

A list of volunteer opportunities follows. If you would like more information on any of these opportunities, please email [bzgift@aol.com](mailto:bzgift@aol.com) or call or text **Brenda Ziegler** at 503.314.5834. If you want to talk to **Steve Hopkins**, President, about these, please text him at 503.314.5811 or email [SteveHopkins@Prodigy.net](mailto:SteveHopkins@Prodigy.net); or reach out to any member you know.

We hope to have a full list of volunteers for the upcoming meeting, which is the Official Annual Meeting (for tax purposes) April 18, 2024.

### Executive Committee on the PCARS Board of Directors

**Vice President:** Duties include arranging programs for 8 meetings per year. We have many people within our Chapter, as well as known-to-Chapter members, who can be speakers and will put on great programs. Members enjoy learning about rhododendrons, various gardens and how-tos on planting from seeds and cuttings, as well as travel presentations. You will contribute articles about the upcoming programs as well as a recap in the following Newsletter. Your 2nd year title is President-Elect. A fun fact is that you are nominated to be the President of the Chapter as your next role. We can go over those responsibilities with you. No experience is required. This is a great way to get started in your volunteer leadership skills!

**Secretary:** The **Secretary** is responsible to document official business for Board of Directors' meetings and Chapter meetings. The Secretary takes attendance at the board meetings, keeps the records, distributes Board of Directors' minutes prior to the Board meeting and makes corrections per the board's request during the approval process of the minutes.

**Crystal Springs Rhododendron Garden Representative:** Work with the City of Portland Parks Department to ensure that Crystal Springs Rhododendron Garden (CSRG) continues to operate under the jurisdiction of the Chapter, with support from and cooperation with the city, in coordination with the Executive Director of CSRG and the President of the Chapter. Please stop by CSRG on Wednesday morning to meet some of the volunteers and take a look around.

**Smith Garden Representative:** Coordinate and assist with maintenance and work parties along with the Smith Garden Committee; manage outreach to solicit volunteers for the 8 weekends at the Garden when guests are allowed in; and help with decisions for Smith Garden. PCARS is the legal owner of the Smith Garden. It is managed by the Portland, Willamette, and Tualatin Valley Chapters. A fabulous woodlands garden, Smith Garden is a place that will entice you to volunteer while you take pictures and breathe the fresh air!

### Committees

**CSRG 75th Anniversary Committee:** In 2025, the Crystal Springs Rhododendron Garden ([history](#)) 75th Anniversary Committee will plan and implement a year-long program of events to recognize and celebrate 75 years at Crystal Springs and to leverage this moment for continued and increased support for the garden. Activities will include planning a gala dinner on the Meadow, researching the history of the garden and codifying that history into programs and printed materials; building relationships with public figures at the City of Portland and State of Oregon,

*continued on next page*

## American Rhododendron Society

### *Purpose*

To encourage interest in and disseminate information and knowledge about the genus *Rhododendron*.

To provide a medium through which all persons interested in the Genus may communicate with others through education, scientific studies, meetings, publications, and other similar activities.

soliciting support and engagement from the wider ARS community, building a marketing plan, and more. (Ideally, committee members will have some ideas of their own!). For more information, please email Brandon Baker ([Brandon@crystalspringsgardenpdx.org](mailto:Brandon@crystalspringsgardenpdx.org)), Executive Director of Crystal Springs Rhododendron Garden and Committee Chair for the 75th Anniversary.

**Membership Committee:** Maintain membership records; manage annual membership renewals; solicit new members; and communicate with the American Rhododendron Society's national office on local membership changes. Knowledge of Excel and software is helpful.

**Nominating Committee:** Reach out to members and potential members to encourage volunteerism on the Board of Directors; review volunteers' strengths and ideas about new directions for the Society. Being on this committee NOW would be super helpful as we would like to present 5 new board members to the Chapter members in March for nomination—and then, in April they would be voted in to start serving July 1.

**Publicity Committee:** Help promote the Chapter internally and externally; create and send out notices about speakers, tours, work days; help with ads to promote events such as The Early Show and Mother's Day Show and Sales.

**Hospitality Committee:** Coordinate refreshments for Chapter meetings and other events such as work "parties"; coordinate potluck dinners for the holiday meeting and the May awards meeting; Coordinate decorators for the tables for the holiday and May meetings.

**Sunshine Committee:** Working with Membership, keep the Chapter updated about our members; why they may not be at a meeting; if it is a milestone birthday, have greeting cards that can be passed around and signed by people when necessary and then you mail or deliver them



*Rhododendron* 'Taurus' (Photo Evelyn Kritler)

### **Additional Activities for which we need volunteers:**

- Early Show and Sale
- Mother's Day Show and Sale
- Work days at Crystal Springs, Smith Garden, and Van Veen Nursery
- Garden Hosts at Smith Garden during the 8 weekends the garden is open
- Give tours at Crystal Springs Rhododendron Garden and Smith Garden
- Bring Treats to the Chapter Meetings
- Participate in Potlucks in December and May for PCARS
- Attend the Smith Garden Soiree in August (potluck with 3 Chapters of members)



## Smith Garden Workday In Snow!

During the snowy March 2nd Saturday PCARS stalwarts readied Smith Garden for the highly anticipated spring visits. The day began with an early morning phone call (that led to an email notice) that the Smith Garden Workday was cancelled. Treacherous weather conditions created challenging travel options. But the stalwarts—Mike Stewart, Ray Clack and Tom Gressler—made their way to Smith. At near freezing temperatures—when they arrived at Smith it was only 34 degrees and snow on the ground—they go a lot done, with Mike texting that “It really looks nice, almost ready for guests. Some small pickup to do, but it is minor and not a distraction. ... All the paths and parking areas are cleaned, and all the larger broken branches have been removed.” Mike took photos of rhodies already blooming with snow on the ground.



*Rhododendron* 'Maya'

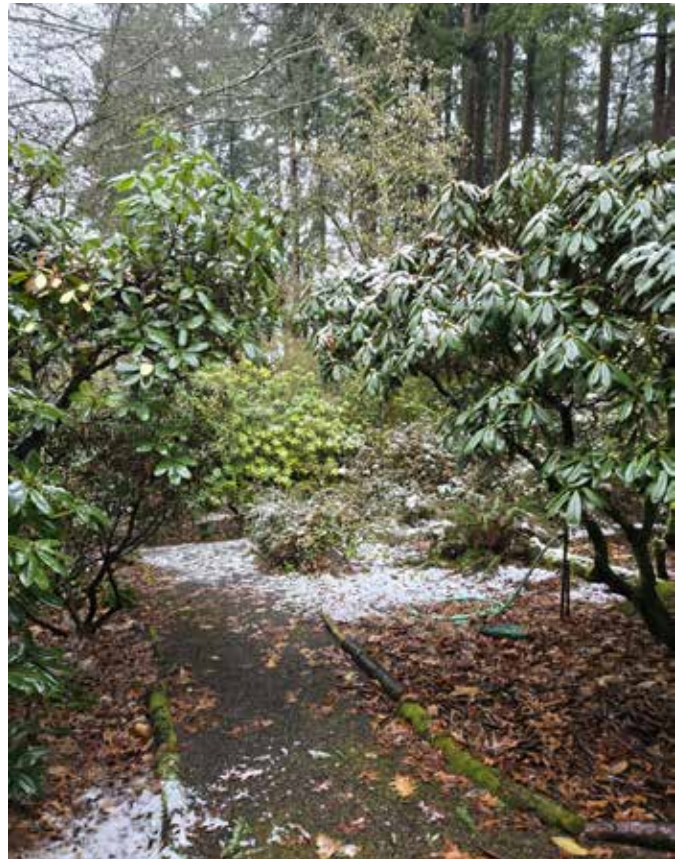


*Camellia* 'Donation'





*Rhododendron* 'Airy Fairy'



Snow at Smith Garden.



*Rhododendron sutchuenense* var. *geraldii*



*Rhododendron* 'Maya'



## Upcoming Events

By Ann Clack

Read Peter Kendall's article "The Cecil and Molly Smith Garden" in [JARS v49n1](#), adapted from the article published in the Summer 1994 issue of [Pacific Horticulture](#).

**Smith Garden Open Days** begin April 5, this weekend. Volunteers still are needed for opening day.

**Hortlandia** PCARS' Hortlandia booth (not Portlandia) (see page 12, this newsletter) will be set up **Friday morning, April 5th**, and be open for sales Friday evening and all day Saturday during Hortlandia hours.

**Crystal Springs Rhododendron Garden Early Show April 13. HELPERS NEEDED!!!** We have changed things up this year! Instead of a judged flower show, our early show will be a display only. As a display, you are NOT required to have only one truss per bottle! (Just remember you might want to bring your own bottle if your entry is large.) You are not required to have 'perfect' entries, although they do look nicer. Is your plant blooming and still in a pot? Bring the whole thing!

This is our opportunity to educate the public about rhododendrons, including other displays such as a leaf display showing different sizes of leaves with and without indumentum or a display on common leaf problems and how to treat them. Let's let show attendees about [Smith Garden](#) and [Van Veen Heritage Garden](#). How about CSRG history! We can advertise the upcoming 75th anniversary next year! Let's get back to basics and become a learning event for the public!

So.....bring in your flowers and displays and just have fun. Your flowers need to be in place inside the cool house by 9am, Saturday, April 13th. While you're there you might think about helping out at the plant sale or stick around in the display.

**Van Veen workday May 18** Meet at 9am for another much-appreciated workday. Besides your appropriate work clothing make sure you wear sturdy shoes and bring leather gloves if you have them. Work will continue until early afternoon. **Van Veen address: 4201 SE Franklin St, Portland, OR 97206**

## Upcoming PCARS Monthly Meetings

By Ray Clack, Program Chair

We have the following speakers scheduled:

**April 18th** Lynda Miller has been hybridizing Iris for years. She will talk us through the process and show many examples of her work.

Lynda Miller is the owner of Miller's Manor Garden in Canby along with Roger & Nathan Miller, her husband and son. Iris isn't the only plant they grow! The nursery is full of fuchsias, witchhazels, hostas, and so much more. Lynda's plant knowledge is vast and varied. Listening to her always is fun and informative.

**May 16th** Norm Jacobs from Arbutus Garden Arts presented a program to our group a few years ago. He could talk about Japanese maples, dwarf conifers, epimediums, not sure of the topic yet. Complete and specific information will be provided about each program before it goes out in the newsletter each month.

## The Van Veen Project

Van Veen Nursery is preparing to replace the old greenhouses (pictures upper left and lower right) with new greenhouses (pictures top right and lower left). Nurseryman Victor Rodriguez is spraying for root weevils in new greenhouses. Personal Protective Equipment ensures worker safety. Photos on this page by Mike Stewart 3/6/24. Photos on next pages 3/16/24 by Martha Dibblee.







Rhodie in deep shade



Camellia



Shawna Gandy



Ann Clack & Adrienne Stacey





Diana Hsieh (Richmond neighbor)



Rhodie with Honey Bee



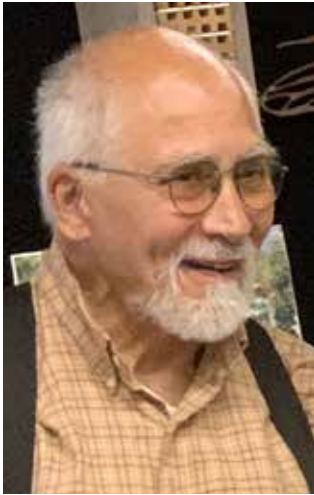
*R. vevereum*



L to R: Ann Clack, PCARS; Rin Jackson, Adrienne Stacey, Shawna Gandy, Bill, Donna, Diana Hsieh, and Heidi (Richmond neighbors).

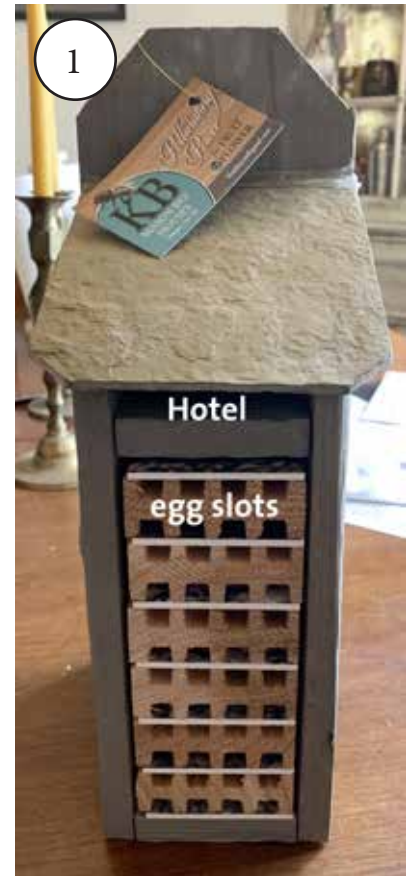


## March Meeting Mason Bees

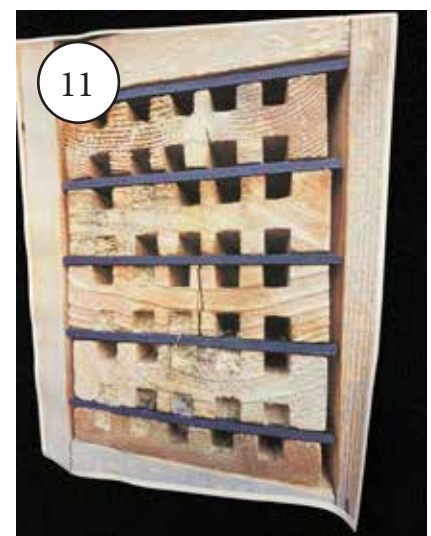
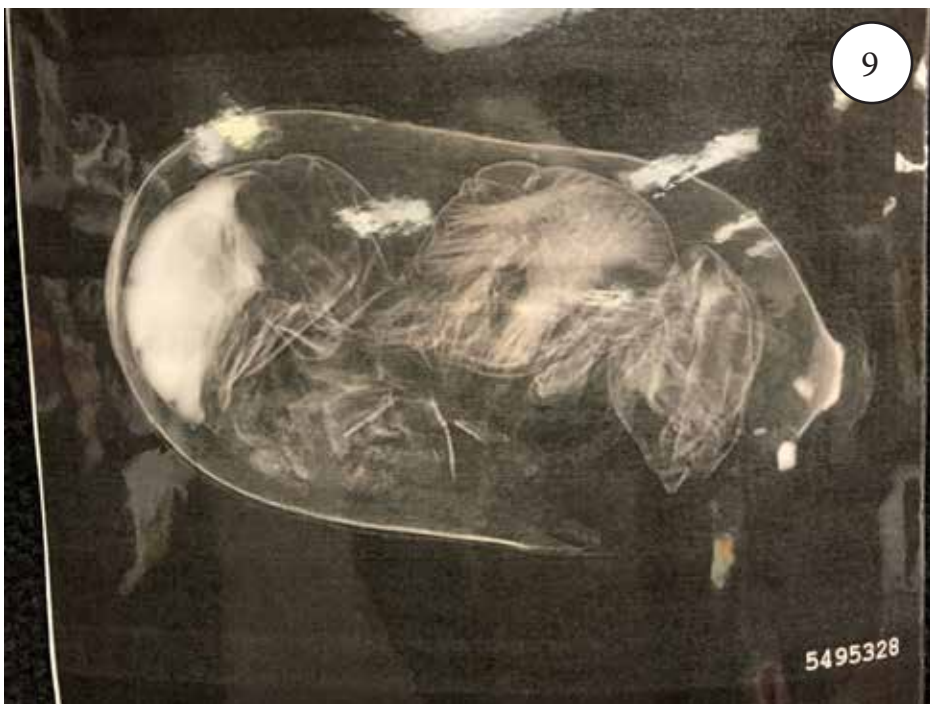


The March 21st meeting featured Mason Bee specialist Karel Beijer (left) who builds Mason Bee houses and raises Mason Bees. Members learned from Karel's hands-on presentation how to successfully raise Mason Bees. For members who missed the program, a 9-minute transcribed [video](#) is available featuring Karel talking about Mason Bees, much as he did at the March meeting. After the meeting eager members purchased Karel's Mason Bee houses.

Mason Bees are solitary bees; there is no queen. Karel provided the schedule for successfully raising Mason Bees. In spring, March-April, cocoons (purchased at a garden store or refrigerated from the year before) are placed in the top part (the hotel) of the Mason Bee house to warm for a couple of weeks before blooming is expected. Mason Bees hatch and females begin collecting pollen and laying eggs in the square slots. The female places female bee eggs first, then male eggs so the males will hatch first. About July 4, a metal shield is placed in front of the slots; by this time the bees have died and the eggs are laid. The shield keeps out predators. In January-February the larvae, now protected in cocoons, are harvested from the Mason Bee house. The cedar slotted boards are removed and the cocoons and house parts are sanitized in chlorinated water (number 8). The cocoons are collected and dried and cold-stored until the next spring when the cycle starts over again. Each female will lay 30 or so eggs.







Captions: 1. KB Mason Bee house; 2. Steve Hopkins and Brandon Baker buying KB Mason Bee houses; 3. Joanne Turner's display of Hellebores; 4. dormant Mason Bee cocoons; 5. Mason Bee cocoons in tracks; 6. pollen balls; 7. Mason Bee cocoons; 8. sanitizing cocoons and equipment; 9. radiograph of Mason Bee cocoon; 10. hatching bee; 11. Mason Bee house with tracks sealed after egg laying. (Photos by Martha Dibblee/Karel Beijer)





## April 5 & 6, 2024



The Hardy Plant Society of Oregon presents its signature plant & garden art sale—small specialist nurseries and garden-themed artists from across the Northwest.

Friday April 5th is the early shopping event from 5PM to 8PM. Advance Friday tickets are \$25.00. The main plant sale is on Saturday April 6th; entry to the sale is from 9AM–3PM. The sale closes at 4PM.

Location: [Westside Commons Wingspan Event Center](#)

- Admission is \$5. Free admission after 2:30 PM.
- Children never pay admission to Hortlandia.
- Parking at the Wingspan lot is \$10.
- [Tickets are available here!](#)

Special feature at this year's event: [Van Veen Heritage Garden](#) will offer a variety of Vireyas grown by the [Van Veen Nursery](#) for sale in its exhibition booth. These "tropical" rhododendrons are all propagated from the Bovee collection that was donated to Van Veen two years ago. They're beautiful, repeat-bloom, species and hybrids that grow happily in the Northwest when protected from freezing temperatures. Come learn more about this new collection—and take one home! We'd love to see you there.



And checkout the videos of [Mike Stewart when he hosted two TV "Garden Time" shows at Van Veen!](#)

(click Van Veen logo to go to Van Veen Nursery)





## Activities of the Portland Chapter ARS

### 2024 Calendar of Events

DATE	PORTLAND CHAPTER	VAN VEEN HERITAGE GARDEN	SMITH GARDEN	CRYSTAL SPRINGS RHODODENDRON GARDEN	OTHER EVENTS
Saturday-Sunday April 6-7		Hortlandia Booth (setup Friday AM)	Open Days		
Saturday April 13				Early Show & Plant Sale	
Saturday-Sunday April 13-14			Open Days		
Thursday April 18	Regular Meeting Lynda Miller Iris Hybrids Auction & Annual Business Meeting				
Saturday-Sunday April 20-21			Open Days		
Saturday-Sunday April 27-28			Open Days		
Thursday-Sunday May 2-5					ARS 2024 Spring Convention Bellingham WA
Saturday-Sunday May 4-5			Open Days		
Saturday-Sunday May 11-12			Open Days	Mother's Day Show & Plant Sale	
Thursday May 16	Awards Banquet Norm Jacobs Japanese Maples				
Saturday May 18		Workday			
Saturday-Sunday May 18-19			Open Days		
Saturday-Sunday May 25-26			CLOSED Memorial Day		
Thursday June 20 Potluck					
July Summer break					
Saturday August 17 (tentative)			Soirée		
Thursday September 19	Regular Meeting Cutting Exchange				
Friday & Saturday September 27-28				Plant Sale	
Thursday October 17	Regular Meeting Species auction				
Saturday October 26			Workday		
November				Volunteer Appreciation Luncheon	



## 2024 April Haiku

In and out  
the lone nuthatch  
at it again

Breaking  
the horizon at sundown  
fullness of the moon

Under a light rainfall  
sound of the bubbling fountain  
a lone crow

-Peter Kendall

## A Rhody Reminder...

Did you know? One of the benefits of your Portland Chapter ARS membership is waived admission at Crystal Springs Rhododendron Garden!

Simply share your name at the gate and mention that you are an ARS member.

Your PCARS membership admits you and a guest on each visit.

Hope this reminder gives you another reason to get out of the house, take a walk (don't forget your raincoat and Wellingtons!), and enjoy this special garden in our City!

## Classified

Send classified notices to **Paul Rogers** [pgr97007@gmail.com](mailto:pgr97007@gmail.com)

**Ron Mapes writes:** I am shutting down my modest personal Rhody nursery and have a substantial collection of 1 gallon and up used pots They are all or part available for free to anyone that needs them and can they can haul away all that they can use. I can be contacted at my email: [ronrhody@coho.net](mailto:ronrhody@coho.net)

## Van Veen Heritage Garden & Nursery Workday

May 18 at 9am is the next Van Veen workday.

Besides your appropriate work clothing make sure you wear sturdy shoes and bring leather gloves if you have them. Work will continue until early afternoon.

**Van Veen address: 4201 SE Franklin St, Portland, OR 97206**

## Signup for 2024 Smith Garden Open Days

Hello members! We are looking for volunteers to staff the [Smith Garden on open garden days](#), taking admissions and selling plants. We need 2-4 people per day to staff the garden from 11:00am until 4:00pm. It's a great time to enjoy one of the finest woodland gardens in its peak season, meet new people that visit the garden or purchase plants, as well as visit with fellow members as you volunteer together. The garden is an amazing asset to our community, and we need volunteers to continue to make that happen!





**SAVE THE DATE !**  
**ARS 2024 Spring Convention**  
**Bellingham, Washington**  
**May 2-5, 2024**

**Four Points by Sheraton, Bellingham**  
**Hotel and Conference Center**  
**714 Lakeway Drive, Bellingham, WA, USA, 98229**  
**Phone: +1 360-671-1011**

**Highlights:**

**Pre-Tour: May 1: Private Gardens around Seattle**

**Convention: Tours \* Seminars \* Workshops \* Banquets**

**Post-Tour: May 5: Gardens around Vancouver, Canada**

**Time to check your Passport!**

**Plus:**

**Plant Sales \* Auctions \* Raffles \* Photo Booth \* Poster Session**

**Help get the message out!**

**Please forward to friends and gardeners in  
your community and around the globe.**

**Visit [ARS2024.org](http://ARS2024.org) for more information and to register.**



**American Rhododendron Society – Local and International**  
*We have much to offer.*

**In Your Local Chapter...**

- **Fun and friendship** with other passionate gardeners



- **Chapter meetings** to learn about essentials such as soil, mulch, pollinators, companion plants, rhododendron care and culture



- **Chapter Newsletters** keep you well-informed and up to date on events, activities.

- **Learn Hands-on skills** such as propagation, pruning, bonsai, container gardening



*Crevice Gardening  
at a Fall Gathering*

- **Propagating Together**





- **Plant sales** with access to a wide range of species and hybrid rhododendrons



- **Fun Local Events**



*Touring Members' Gardens*

- **Garden Tours & Bus Tours**



*Tours with friends to beautiful gardens*

## ***From the ARS...***

- **Quarterly Journal** with valuable plant and Society information



- **Seed Exchange** Program
- **World Class Website** with information on the care and culture of rhododendrons, a Plant Data Base, activities, events [www.rhododendron.org](http://www.rhododendron.org)
- **Tours** of World-Famous Gardens during conventions or conferences



*Japanese Garden, Portland, Oregon*



*Rhododendron Park, Bremen, Germany*

## Resources

*Portland Chapter* of the American Rhododendron Society [Newsletter Archive](#)

Crystal Springs Rhododendron Garden <https://www.crystalspringsgardenpdx.org/>

Oregon ARS Chapters

- Portland <https://www.rhodies.org/>
- Eugene <https://eugene-chapter-ars.org/>
- Siuslaw <https://siuslawars.org/index.html>
- Tualatin <http://tualatinvalleyars.org/tualatinvalleyars.org/Welcome.html>

Cecil & Molly Smith Garden <http://smithgarden.org/smithgarden.org/Welcome.html>

**Peter Kendall's** article "The Cecil and Molly Smith Garden" in [JARS v49n1](#). This article adapted from the original in [Pacific Horticulture Summer 1994](#) documents the origin of Smith Garden; why and how it was selected; and why its location is key to its success.

Van Veen Heritage Garden & Nursery <https://vanveennursery.com/>

YouTube video: Van Veen Rhododendron Propagation on Garden Time with Mike Stewart  
<https://www.youtube.com/watch?v=yUNUqChx4r8>

YouTube video: Van Veen Rhododendron Heritage Garden on Garden Time with Mike Stewart  
<https://www.youtube.com/watch?v=WnPR7R95biQ>

Read about the rhododendron [root weevil](#) in the Siuslaw Chapter newsletter 'Macrophyllum'.

### Other ARS news

- Mt Arrowsmith Rhododendron Society <https://marsrhodos.ca/> Qualicum Beach, BC  
'Rhodovine' Linda Derkach [lindaderkach@shaw.ca](mailto:lindaderkach@shaw.ca) is President of ARS.
- Victoria Rhododendron Society Newsletter (Lois Blackmore) <https://victoriarhodo.ca/>; access all District 1 (BC) chapter websites at <http://www.rhodos.ca/chapters.html>.

**American Rhododendron Society Chapters** <https://www.rhododendron.org/locations.htm>

e-JARS available online <https://scholar.lib.vt.edu/ejournals/JARS/>

### Other rhododendron news

**Rhododendron Species Botanical Garden** [Plant Catalog](#) ([rhodygarden.org](http://rhodygarden.org)) and [order form](#).

Contact Grace Pham [grace@rhodygarden.org](mailto:grace@rhodygarden.org) for more information.

**Danish Chapter of the ARS** <https://www.rhododendron.dk/>

**Humboldt Botanical Garden** <https://www.hbgf.org/>

**Washington County Master Gardeners** <http://washingtoncountymastergardeners.org/>  
(Harriet Ottaviano at [Hbjotto90740@yahoo.com](mailto:Hbjotto90740@yahoo.com)).

**North American Rock Garden Society** <https://www.nargs.org/>

**Penstemon Society** <https://penstemons.org/>

**Hardy Plant Society of Oregon** <https://www.hardyplantsociety.org/>

**Eriogonum Society** <https://erigonum.org/>

**Hulda Klager Lilac Gardens** <https://lilacgardens.com/>



## Editor's Page

Photos by Martha Dibblee, RN Editor

Photos on this page were taken in March 2024 from various locations around the Willamette View Campus where I live.



*Magnolia soulangeana* (Saucer Magnolia)



Foliage from *Rhododendron* 'PJM Compacta' (and below left).



*Rhododendron* 'PJM Compacta' (lavendar very early *Rhododendron* hybrid)



Camellia



# Gardenfest Plant Sale



**Saturday, May 4**  **9:00 a.m. - 1:00 p.m.**

PCC Rock Creek Campus Hoop House Area Near Bldg. 4  
17705 NW Springville Road, Portland

**6500+ plants expertly selected for the PNW**

- Oregon native plants
- Perennials, shrubs, vegetables, houseplants and more for flower-filled gardens and bountiful harvests!

## Garden tips & advice

- Gardening in a changing climate
  - Pollinator-loving
  - Vegetables & herbs
  - Water-wise
- “Let’s Talk Plants!” Master Gardener™ Booth
- Master Gardener free “How to . . .” guides
- Visit our Education Garden for ideas



In collaboration with  
and in support of  
**Oregon State University**  
Extension Service  
Master Gardener™

**GREAT PRICES**

**Children’s activities, gifts for gardeners, books, tools & more!**

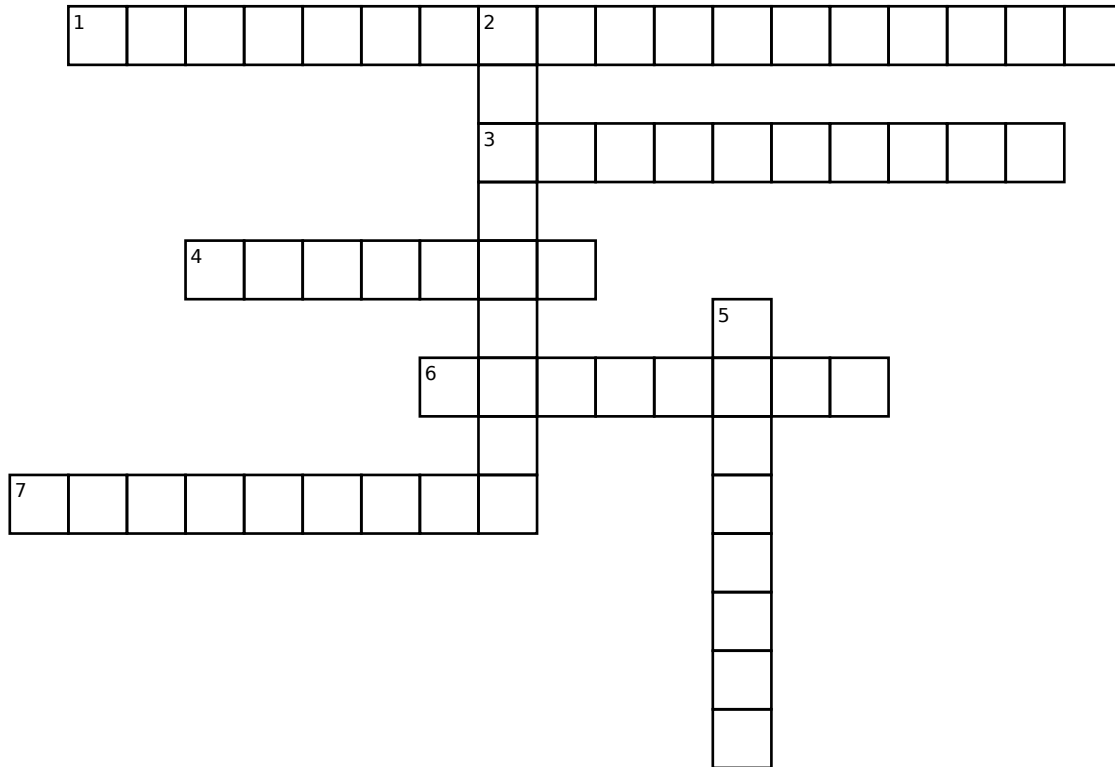


[washingtoncountymastergardeners.org](http://washingtoncountymastergardeners.org) 



## The Crossword Project

Awhile back there was mention of a rhodie crossword puzzle book. The rhodie crossword puzzle book is copyright so it can't be copied but there's an online crossword puzzle generator app that's available. Using this app and our resources ([Rhododendron Species Botanical Garden](#), [ARS resources](#)) the following crossword puzzle was created. Answer sheet on next page.



### Down:

2. Botanic family including rhododendron, the heaths, heathers, cranberries, blueberries, mountain laurels, Japanese andromeda (pieris) and other ornamental plants.
5. A woolly covering on the upper side of mature rhododendron leaves

### Across:

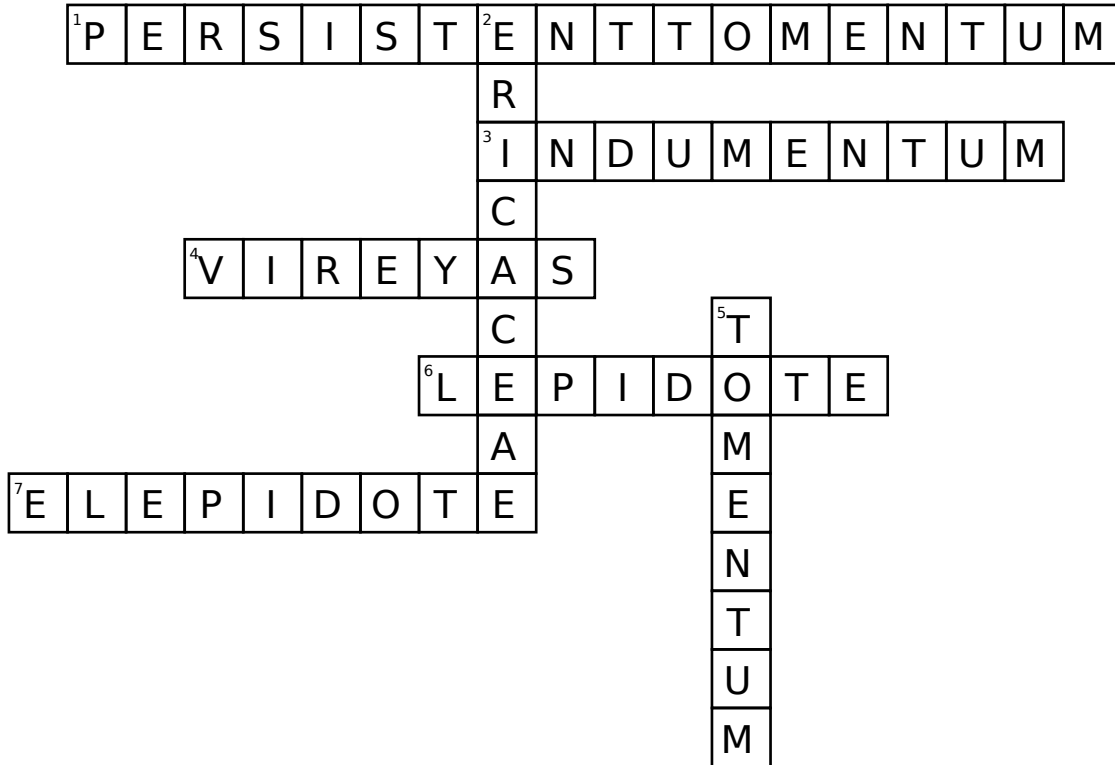
1. Type of tomentum that remains on a rhododendron leaf to maturity (2 words)
3. A woolly covering on the underside of mature rhododendron leaves.
4. Tropical rhododendrons with scales.
6. Rhododendron species characterized by the presence of scales on various parts of the plant, most obviously on the undersides of the leaves.
7. Rhododendron that have no leaf scales and are generally the large-leaved species.

If you're so inclined, send clues to [editor@rhodies.org](mailto:editor@rhodies.org). Clues and answers need to be in the format: word, definition. For example:

indumentum, A woolly covering on the underside of mature leaves.

tomentum, A woolly covering on the upper side of mature leaves.

persistent tomentum, Type of tomentum that remains on a leaf to maturity. (2 words)



Down:

- 2. Botanic family including rhododendron, the heaths, heathers, cranberries, blueberries, mountain laurels, Japanese andromeda (pieris) and other ornamental plants.
- 5. A woolly covering on the upper side of mature rhododendron leaves.

Across:

- 1. Type of tomentum that remains on a rhododendron leaf to maturity (2 words)
- 3. A woolly covering on the underside of mature rhododendron leaves.
- 4. Tropical rhododendrons with scales.
- 6. Rhododendron species characterized by the presence of scales on various parts of the plant, most obviously on the undersides of the leaves.
- 7. Rhododendron that have no leaf scales and are generally the large-leaved species.





# 10-Minute University™ News

## 2024 At-A-Glance

It's time for the April Webinars!

Register for March and April webinars at


<https://clackamascountymastergardeners.org/10-minute-university/>

- 3/27 Climate Friendly Lawns
- 3/28 Growing Tomatoes II
- 4/3 Garden Transformation
- 4/10 Debunking Gardening Myths
- 4/11 Raised Bed Gardening
- 4/17 Plant Trial Winners
- 4/24 Gardening for Birds

## 10-Minute University™ Webinars: Let's Grow Together!



Every Wednesday and some Thursdays, 1/10 - 6/12/2024. Free w/ pre-registration. Details @ [cmastergardeners.org](http://cmastergardeners.org)

1/10 Climate Resilient Garden	1/17 Pruning Fruit Trees	1/18 Pruning Ornamental Trees	1/24 Growing Fruit Trees	1/31 Growing Blueberries	2/7 Garden Tools	2/8 Growing Cane Berries	2/14 Soil Amendments
2/21 Growing Tomatoes I	2/28 Growing Early-Vegetables	3/6 Garden Design 101	3/7 Rain Garden & Bioswale	3/13 Hosting Bees (Mason & Leafcutter)	3/14 Soil & Planting	3/20 Integrated Pest Management	3/27 Climate Friendly Lawns
3/28 Growing Tomatoes II	4/3 Garden Transformation	4/10 Debunking Gardening Myths	4/11 Raised Bed Gardening	4/17 Plant Trial Winners	4/24 Gardening For Birds	5/1 Native Plants	5/8 Groundcovers for Un-irrigated Landscapes
5/15 Growing Tomatoes III	5/22 Growing Root Crops	5/29 Growing Cover Crops	6/5 Growing Vegetables Year-Round	6/12 Enabled Gardener	 <p>In collaboration with and in support of the Oregon State University Extension Service Master Gardener™ Program.</p>		

OSU Extension Service prohibits discrimination in all its programs, services, activities and materials.

Accommodation request related to a disability should be made by 1/8/2024 to Catalina Santamaria at 503-655-8631, [Catalina.Santamaria@oregonstate.edu](mailto:Catalina.Santamaria@oregonstate.edu)

Climate Resilience | Healthy Plants | Beauty | Clackamas County Master Gardener™ Association | Garden Biodiversity | Nutritious Food | Healthy Gardener

10-Minute University™ is the trademark of short classes on essential gardening information.

All presentations are free and each is accompanied by a handout.

Oregon State University owns the trademark and Clackamas County Master Gardener™ volunteers develop and manage the program.

Portland Chapter  
The American Rhododendron Society  
PO Box 86424  
Portland OR 97286-0424  
<https://www.rhodies.org/>

#### **District 4 ARS**

District Director: Jack Olson  
Alternate: Mike Bones  
Eugene Chapter - Lorrie Zeller  
Portland Chapter - Steve Hopkins  
Siuslaw Chapter - Day Farrald  
Tualatin Valley Chapter - Ron Mapes  
Willamette Chapter - Dana Malby

The **Portland Chapter of the American Rhododendron Society** is registered in Oregon as a 501(c)(3) non-profit organization. Dues and donations are qualified charitable tax deductions.

#### **Membership**

Benefits include chapter meetings, quarterly issues of the Journal of the American Rhododendron Society, plant sales and auctions, garden events and more. Dues: \$40 per year. Other membership options:

<https://www.rhodies.org/>

Membership Chair: Vacant

#### **Website**

<https://www.rhodies.org/>

Webmaster: Vacant

#### **Officers**

President: Steve Hopkins  
Vice President: Ray Clack  
Past President: Steve McCormick  
Secretary: vacant  
Treasurer: Steve Kaminski

#### **Board Members**

John Stephens, Mike Stewart,  
Joanne Turner, Ann Clack,  
Dennis O'Malley, Karen Hanson,  
Donna Sell, Brenda Ziegler

#### **Newsletter**

*Rhododendron News* is published monthly except July, distributed via email.

Editor: Martha Dibblee  
[editor@rhodies.org](mailto:editor@rhodies.org)

For print edition, contact:

Martha Dibblee (503) 484-4831

#### **Van Veen Nursery &**

##### **Van Veen Heritage Garden**

[vanveennursery@hotmail.com](mailto:vanveennursery@hotmail.com)  
(503) 777-1734

#### **Crystal Springs Rhododendron Garden**

Volunteering/Tours/Photo-shoots: [info@crystalspringsgardenpdx.org](mailto:info@crystalspringsgardenpdx.org)

Director: Brandon Baker  
[brandon@crystalspringsgardenpdx.org](mailto:brandon@crystalspringsgardenpdx.org)

Operations Manager: Shannon Pinkham, [shannon@crystalspringsgardenpdx.org](mailto:shannon@crystalspringsgardenpdx.org)

**Friends of Crystal Springs:**  
[FRIENDS ANNUAL PASS](#)

Donations: [Donate](#)

#### **Cecil & Molly Smith Garden**

Chair: Vacant

Contact: [agross@teleport.com](mailto:agross@teleport.com);  
[smithgarden.org](http://smithgarden.org)



[Portland Chapter Rhododendron Society & Crystal Springs Rhododendron Garden All-ARS Facebook Page](#)