

Portland Chapter, American Rhododendron Society

Calendar

November 9, 2016
Dormancy Luncheon
Crystal Springs Rhododendron Garden

November 17, 2016
Regular meeting
Social time 7:00PM
Meeting: 7:30PM
Speaker: Wally Reed
Program: Developing the Rhododendron Hillside in Bush's Pasture Park, Salem, OR.

Meeting Info

Regular chapter meetings are held on the third Thursday of the month (except in June, July, and August which have other events).

Meetings start at 7 pm with a social half-hour preceding the main meeting. We clean up and exit by 9:30 pm.

Location: All Saints Episcopal Church - At the corner of SE 40th and Woodstock, Portland, Oregon



November Program

By Caroline Enns and Steve Hall

The Portland Chapter of the American Rhododendron Society will hold its November meeting on Thursday, November 17, 2016 from 7:00 PM—9:00 PM.

Our speaker for the November program will be Wally Reed, longtime President of the Willamette Chapter of the ARS, whose program is entitled “Developing the Rhododendron Hillside in Bush’s Pasture Park, Salem.”

Oregon has two new public rhododendron gardens, under development since 2010: Portland Parks’ Cloud Forest Garden in Washington Park; Salem Parks’ Rhododendron Hillside in Bush’s Pasture Park. . Salem’s Rhododendron Hillside has been a “science project”, a “public sector management project”, and a lot of fun from the beginning. How it got started, and how the Willamette Chapter of the ARS has managed it (without a formal design or plan) to achieve year-round color and variety has been a step-by-step process. Managing torrential rains, preserving the white oak canopy while not over-irrigating, keeping plants happy within 5 distinct environmental areas, and finding out what visitors really like will be explored, **And, year-round color will be featured— fun for all.**

Wally Reed enjoyed a long research and teaching career with the Environmental Sciences Dept. of the University of Virginia in Charlottesville. His research focused on land use, air quality and geographic information systems. He joined the Willamette Chapter of the ARS on a gift membership after retiring in 2001. He was promptly elected President of the Chapter, and subsequently President for Life, 10 years and counting. For the past 6 years, he has been deeply involved in the subject of his presentation, which is located in front of his home in Salem.

Our meeting is open to members and nonmembers alike; please invite your friends to join us.

Free. Sponsored by the Portland Chapter of the American Rhododendron Society.

Purpose

To encourage interest in and disseminate information and knowledge about the genus *Rhododendron*.

To provide a medium through which all persons interested in the genus may communicate with others through education, scientific studies, meetings, publications, and other similar activities.

The Portland Chapter of the American Rhododendron Society is registered in Oregon as a 501 (C)(3) non-profit organization. Dues and donations are qualified charitable tax deductions.

Meeting Calendar through January, 2017:

November 9, 2016

**Dormancy Luncheon
Crystal Springs Rhododendron
Garden**

November 17, 2016

**Regular Meeting
Social time 7:00PM
Meeting 7:30PM
Speaker: Wally Reed
Program: Developing the Rhodo-
dendron Hillside in Bush's Pasture
Park, Salem, Oregon**

November 22, 2016

**Board Meeting
7:00 PM
Van Veen Nursery; subject to
change due to Thanksgiving holi-
day**

December 15, 2016

**Winter Solstice Party
Set-up 6:30 PM
Dinner 7:00 PM
Potluck Dinner and Gift Exchange
Program: Members' Slides and
Digital Images**

January 19th, 2017

**Regular Meeting
Social time 7:00PM
Meeting 7:30PM
Speaker: Norm Jacobs
Program: Japanese Maples, Their
Use in Mixed Plantings**

Haiku

By Peter Kendall

The croak of the frog
The silence of the path —
each embracing the other

Snatches of color
In the turning maple —
a prelude to fall

Windows through the maple
From one plane to another
to infinity

Ceaseless waterfall
slowly becoming the mover
of mountains

Dissipating fog
The path under the maples
in a brighter light

Looking Ahead:

April 27-30, 2017

**ARS International Convention
Eureka, California
(See page 7)**

**For more information, call or email
June Walsh, 707-443-0604 or Rhody-
Hostel@suddenlink.net or on the web
at EurekaRhody.org**

President's Message for November

By Dennis O'Malley

Our newsletter editor was unable to attend the October program and asked me to include an account for others who were likewise unable to attend. Those of you who have seen Luurt Nieuwenhuis' photographs at recent Christmas banquets are familiar with the astonishing clarity and beauty of his work. They have also observed his ability to focus on almost microscopic aspects of the natural world, revealing details, complexities, and beauty in things most of us don't even notice. A spot of glare from our automatic flash turns out in his hands to be an entire miniature ecosystem or a complex colony of insects, molds, or fungi.

That is the experience to which Luurt treated us in his October program, entitled "Close-Up Digital Photography: Theory and Practice." The photographs alone were worth the attendance. But there was both theory and practice for beginners and experts alike. He explained for novices like myself how ISO settings, apertures, and exposure times interact and affect focus and depth of field. He explained why auto-focus so reliably and infuriatingly refuses to understand what you are really trying to focus upon. For the more initiated, he talked about how digital color photos are built from basic color components, and how the balance of those components can be adjusted in photographs and with *Photoshop* style programs. He talked about strobes and other lighting regimens, and even about how multiple exposures, each inadequate in itself, can be aggregated into a single clear photograph with computer assistance. I expect that both the experts and the neophytes in the audience came away with food for thought and practice. Perhaps we will see the effects at this December's banquet when the members present their favorite photographs of the year,

The rest of the meeting was also particularly enjoyable. We welcomed some new members who appear to have enjoyed their visit. They were assisted in that by Steve Hall, who filled in for Mike Domaschofsky on the raffle, with excellent comedic timing. The rhododendron species auction was both fun and successful. If memory serves, we auctioned off about 35 species plants. The bidding was spirited, competitive and entertaining, reflecting the camaraderie of people who have been friends for a long time but are willing to joust both verbally and in their bidding. The auctions are often my favorite part of some evenings for that reason.

The power of such camaraderie over decades and lifetimes was also evident in another recent event, the celebration of the 100th anniversary of the birth of Ted Van Veen, held on his birthday, November 4th, at Van Veen Nursery. Kathy Van Veen was in attendance, as were about 75 members, family, friends and neighbors. Kathy and Mike Stewart (and probably others) collaborated on a presentation of Van Veen family photos featuring Ted through the years.

Ted had an exuberant, welcoming smile that leaped out of even the black and white photographs and lighted up the room even years after his passing. A toast to Ted was poured in Scotch as he apparently preferred, and raised in his memory. It was a warm and fine occasion. We are thinking of repeating the photographic presentation at the December banquet for those of you who missed it.

Online Shopping and the ARS Store: How to Help Fund the ARS With Your Shopping

From the Willamette Chapter's newsletter

Anytime you shop online for just about anything, please consider first going through the American Rhododendron Society Online Store. The ARS Online Store is reached by this link: <http://arsstore.org> . On this site you will find a very wide range of merchants who have agreed to give the American Rhododendron Society a referral fee of 4% to 25% on each sale "referred" by arsstore.org. Just use a link from the ARS Online Store to go to a merchant's site and buy something as you normally would. You get the same low price and help the ARS, too!

Basics of Using Amazon on ARSStore.org:

1) **Go to ARSStore.org and from there click on the Amazon logo.**

Amazon sells just about everything. As long as you go to Amazon from ARSStore.org, the ARS gets a referral fee.

2) **Do NOT use Amazon Smile!**

Due to the possibility that the ARS would lose most of the over 5.6% it typically receives on each purchase and also the probability that the wrong one of the 55 different ARS 501(c)(3) numbers could be used, use of Amazon Smile is too risky. Let's only use ARSStore.org and not Amazon Smile and get over 5.6% rather than hoping we get 0.5%.

3) **Don't worry about privacy.**

Amazon reports to the ARSStore.org Manager on every item purchased because the commission the ARS receives depends on the price and from which department it was purchased. Amazon states the department and amount and the ARS commission but does not disclose who ordered the product, so there is complete privacy.

4) **Every purchase, no matter how large or how small, contributes. Please remember to use the ARSStore.org.**

The photograph on page 5 of *R. vaseyi* in spring bloom was taken by Susan Lightburn / from [hirsutum web-site](http://hirsutum-web-site).

The photograph on page 5 of *R. vaseyi* in fall color was taken by Hank Helm / from [hirsutum website](http://hirsutum-website).

A Beauty in Spring and Autumn: *R. vaseyi*

By Maria Stewart

When autumn arrives in the Pacific Northwest after a fairly dry summer, as it did this year, we are often privileged to experience a “second blooming” of our deciduous azaleas. The beautiful color of their leaves, which will soon decorate the ground below them, can be soft pinkish-red, yellow, orange or dark red. And so it is with *R. vaseyi* with its pinkish-red fall leaves. Or is the color turning more to a striking orange when the sun shines through them? Best of all, this azalea does not get mildew to spoil its attractive foliage.

Here is more about *R. vaseyi*:

Classification: Subgenus *Pentanthera*: Section *Rhodora* (There are only 2 species in *Rhodora*, the other species being *R. canadense*.)

Distribution in the wild: North Carolina, in ravines and wet sites at 1,000 to 3,000 feet.

About its name: Named after George S. Vasey, a plant explorer, who found it in 1878. His family emigrated from England to the U.S. and settled in New York State.

Flowers: The flowers display before the leaves; they range from white to deep pink with greenish throats and a few red and bronze spots. A selected clone is *R. vaseyi* ‘White Find’, but the dominant color is a range of pinks. The corollas are 2 inches wide and are widely funnel-shaped. Each corolla has 5 wing-like lobes and the lobes are arranged in the two-lipped shape like *R. canadense*. (However, the two-lipped shape is about the only trait that they share.) Bloom time is April to May. No fragrance.

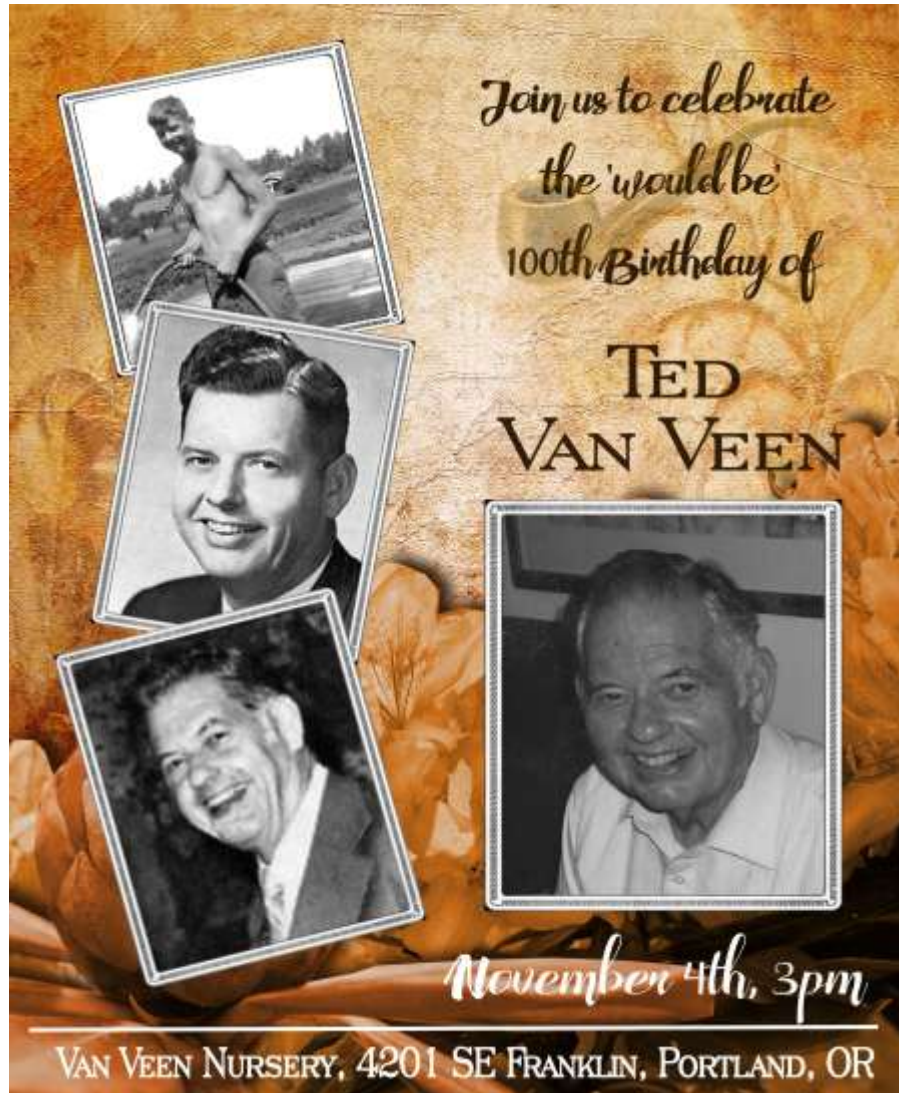
Foliage: Elliptic, tapering at each end of the leaves; green with paler undersides; 5 inches long.

Structure: Upright growing and bushy; 5 feet in 10 years.

Hardiness: -15 degrees F.

Siting in your garden: likes moist soils with filtered sun but not shade.





In Memory of Robert W. “Bob” Franz (February 18, 1924—August 9, 2016)

Bob was an avid gardener who enjoyed his beautiful rhododendron garden. He was a member of the Board for the Rhododendron Species Foundation in Federal Way, Washington and served as the Chairman of the Board of the Japanese Garden in Portland. Together, Bob and his sister, Elsie Franz Finley, have had an enormous impact throughout Oregon and Washington, especially at the University of Portland and Providence Health and Services. In the rhododendron world, he is described as a kind and thoughtful man. Mike Stewart will always treasure the thoughtful phone calls from Bob each year, expressing his joy as *Rhododendron campylogynum* var. *myrtilloides* bloomed in his garden. For our 50th ARS National Convention (1995) in Portland, Bob helped to fund a portion of it. He also donated a generous sum for the publication of the book, “The Pacific Coast Rhododendron Story”, created by the Portland Chapter. The legacy of Bob Franz is a lifetime of giving to others.

Submitted by Maria Stewart.

Coming Events

American Rhododendron Society

2017 International Convention

April 27 - 30, 2017 - Eureka, California

Red Lion Hotel and Sequoia Conference Center

The Venues and the Area

Mark your calendar now for **April 27-30, 2017**. The Eureka Chapter of the American Rhododendron Society will host the annual national convention. The convention will bring Rhododendron enthusiasts from across the United States, Canada and around the world to world-famous Humboldt County, California.

The Red Lion Hotel will be our host hotel, with a rate of \$99.00 per room per night. The rate includes a full breakfast and an airport shuttle. The new, state of the art Sequoia Conference Center, three blocks from the hotel, will be our meeting and program venue. Convention attendees can walk, drive or take a shuttle between the hotel and the center.

For many ARS members, seeing the Coast Redwoods (*Sequoia sempervirens*) is high on the must-see "bucket list". Humboldt County has the greatest concentration of ancient redwood groves, with over 50,000 acres in Humboldt Redwoods State Park alone. Prairie Creek Redwoods State Park contains herds of Roosevelt Elk and Fern Canyon, one of the sites used in filming "Jurassic Park". Patrick's Point State Park shows off replicas, still in use, of local first-nation buildings and magnificent views of the rugged coastline with an opportunity to pick up agates on a cliff-edged beach.

Rhododendron macrophyllum (synonym: *R. californicum* Hooker) can be found in abundance among the redwoods. Many open areas in the county host the Western Azalea, *Rhododendron occidentale*. Stagecoach Hill, famed among rhodoholics for the Smith-Mossman collections of *R. occidentale*, is just North of Patrick's Point State Park. Fern Canyon is not accessible by bus, but convention tours are in the planning stages to furnish opportunities for attendees to visit as many of the other attractions as possible.

In addition to the area's redwood parks, Fern Canyon, rugged coastline and Stagecoach Hill, Eureka and its neighboring towns abound with well-preserved Victorian-era homes displaying the ornate Queen Anne "Carpenter Gothic" style. The Carson Mansion, one of the most photographed homes in North America, is the best-known example. The home is now a private club, but the exterior shows the lavish lifestyle of the "Lumber Barons" in the late nineteenth century. A tour is planned that will allow attendees to view a large number of Victorian buildings in Eureka as well as in the Victorian Village of Ferndale.

For more information call or email June Walsh, 707-443-0604 or RhodyHostel@suddenlink.net, or on the web at EurekaRhody.org.

We expect to have more details in our Portland Chapter newsletter in the months ahead, as well.

Portland Chapter of
the American
Rhododendron
Society

PO Box 86424,
Portland, OR 97286-0424
ADDRESS SERVICE
REQUESTED

Phone: 503-777-1734 for
meeting cancellations due
to weather

Web: www.rhodies.org

Post Master: Time sensitive
mail; please deliver before
November 10, 2016

U.S. Postal Service statement of
Ownership, Management, and Cir-
culation (as per 39 U.S.C. 3685)

Publication Title: *Rhododendron News*
Total number of copies mailed per is-
sue: **225**
Owner: **Portland Chapter of the
American Rhododendron Society**,
PO Box 86424, Portland, OR 97286-
0424

CHAPTER OFFICERS

President: *Dennis O'Malley*
Vice President: *Caroline Enns*
Past President: *Brenda Ziegler*
Secretary: *Carol McCarthy*
Treasurer: *Dick Cavender*

BOARD MEMBERS

(Through June 30, 2017) **Caroline
Enns, Steve Hall, Steve Hopkins, Bill
Zanze, Dave Collier, Maria Stewart**
(Through June 30, 2018), **Ann Clack,
Ray Clack, Mike Stewart, Kathy
Van Veen, Joanne Turner**

GARDEN INFO:

Crystal Springs Rhodo. Garden

Co--Chairs:
Bob MacArthur, 360-256-2522
ltcmacret1@aol.com
Dan McLaughlin,
dvmclau@comcast.net
Tours/Volunteering:
csrgvol@gmail.com
Gatehouse:
Tom Hoffman, 503-452-0975
Rose Kress, 971-239-9016
Friends of Crystal Springs:
Kathy Van Veen, 503-777-1734
Events:
Rachael Moloney, 503-975-6743

Cecil & Molly Smith Garden
Chair: **Herb Spady**, 503-874-1445

Newsletter, membership, and
ownership: The Portland Chapter is
a local Chapter of the American Rho-
dodendron Society. Combined annual
dues to both the national society and
local chapter are \$40. Membership
benefits include nine or more newslet-
ters, discounts, and activities.

Rhododendron News is mailed by first
class postage (permit #1134, Port-
land). Photographs and images may
only be reproduced with permission
from the owner.

Articles: Deadline is the chapter
meeting. Send materials to newsletter
editor, at: **tjhoffman56@yahoo.com**,
or via mail to: 4765 SW 38th Place,
Portland, OR 97221

Delivery: Questions should be di-
rected to: **Maria Stewart** at 503-668-
7565.

Website: **www.rhodies.org**; web
masters: **Steve Hall and Caroline
Enns**

Membershi p Updates: John
Stephens & Stephen McCor-
mi ck, Membershi p Co-Chai rs, e-
-mai l :
j d. stephens@outl ook. com
ssmccormi ck@outl ook. com